

# HANYO



STEP UP TO NEXT LEVEL



<http://biowood.my>

## BIOWOOD

E-CATALOGUE





## HANYO BIOWOOD

Hanyo Composite Wood is a leading composite wood manufacturer offering a full array of lightweight materials to minimise costs, improve quality and seeks to lead by an example in creating a successful and growing business environment, benefiting the community.

Our product line covers a wide range of composite wood products ranging from composite wood pallets, flooring, decking, ceiling, louver, cladding, wall panel, screening, street furniture, railing series and we also produce custom design based on your requirement. We specialize in providing solutions for Diy Market, Building Systems and Construction. All products are easy to install and maintain. Each piece has a consistent quality and finishing, which does not require sanding, priming or sealing for internal wall or ceiling application. It is the perfect material that can be used for both interior and exterior of the residential or commercial projects.

Through our products, we are committed to redefine the concept of value in construction and remodelling industries by providing smart, efficient and healthy alternatives to conventional building materials.





# IMAGING WHAT BIOWOOD CAN DO



- Cladding
- Internal / External Wall Panel
- Ceiling
- Flooring
- Decking
- Screening / Sun Shades

- Facades
  - Louver / Blade
  - Pole / Beam / Fence / Lath
  - Furniture
- The possibilities  
are endless



**HANYO BIOWOOD**



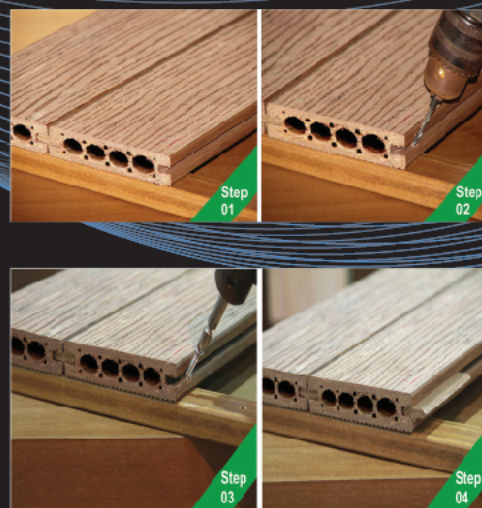
## DECKING

Durable, sleek, easy installation and low maintenance decking. It is the ideal product for indoor and outdoor use as it made to withstand the elements of nature.





## DECKING CLIP INSTALLATION METHOD





## INTERNAL PANELLING

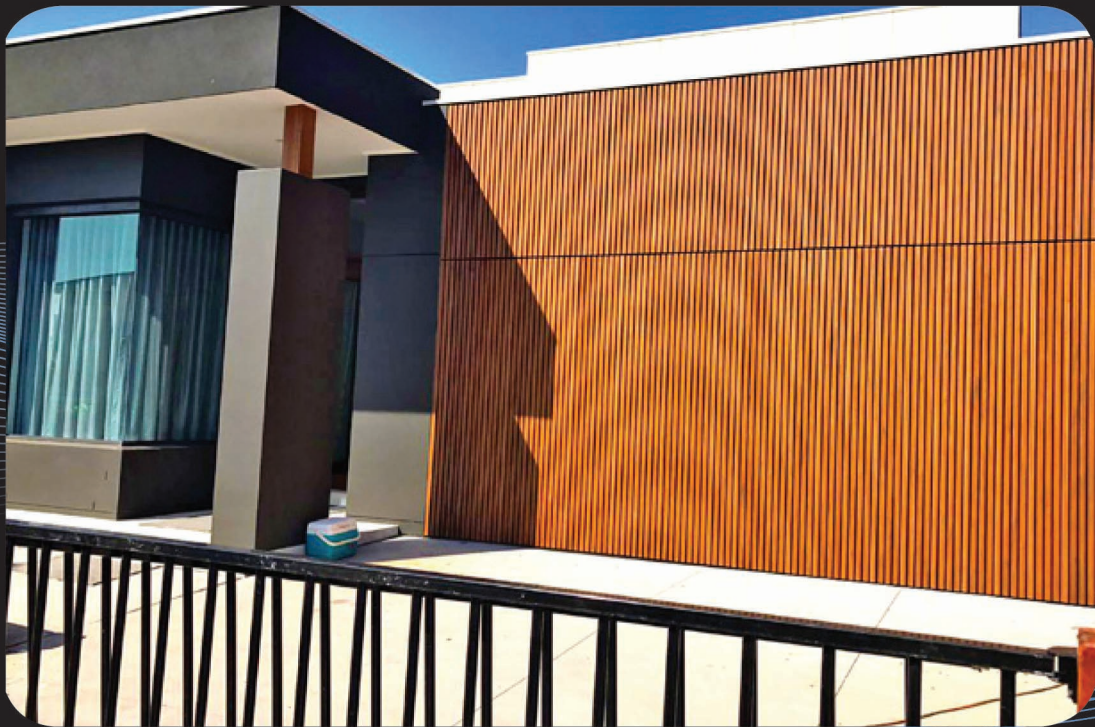
With its natural timber look, an alternative application for residential or commercial that bring adding value to your investment. With its easy installation, painting or varnishing is not required for internal application for ceiling or internal panelling





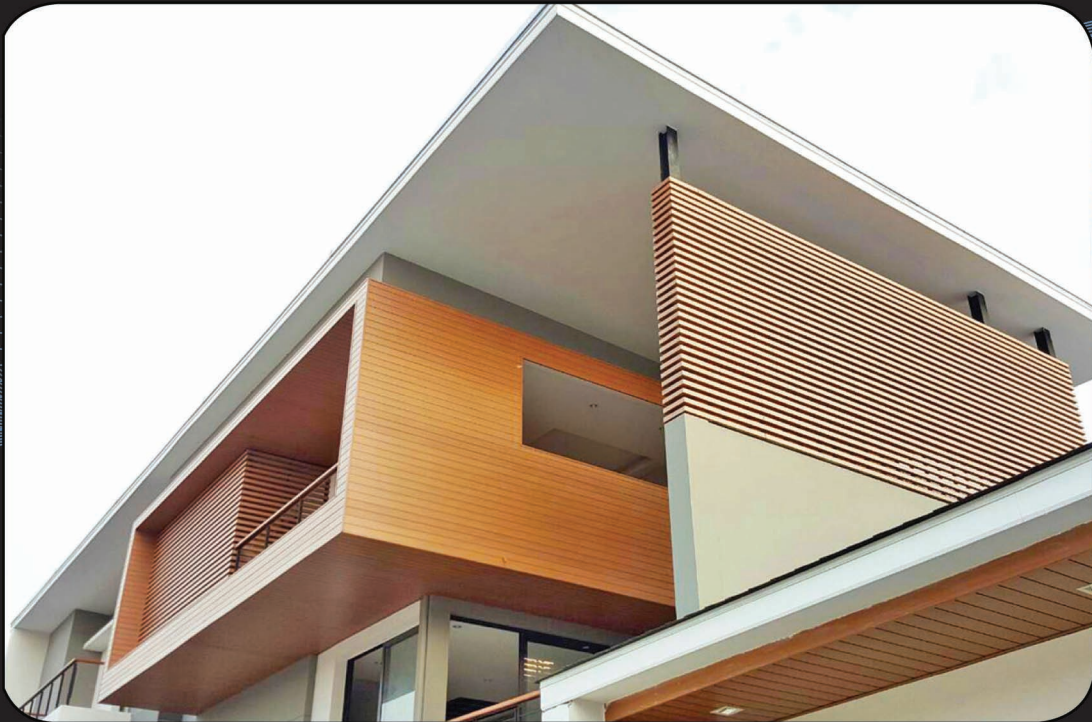
## OUTDOOR PANELLING/CLADDING

Protect your home or building against the elements of nature with style.  
Simply a touch of elegance which brings warmth and architectural design to your home or building.





## OUTDOOR PANELLING/CLADDING





## CEILING





## FACADE SCREEN





## LOUVER BLADES

Look no further if you are seeking a stylish, low maintenance, easy to install solution to provide privacy and protect your outdoor area.





# FEATURE AND BENEFITS OF BIOWOOD PROUDUCTS



**The Ability To  
With-stand All Weather**



**Resistant To Water**



**No Hazardous**



**Anti-Termite**



**Can Be Fixed With Screws**



**Long Life**



**Can Be Recycled  
After Used**



**Can Be Applied  
As Required**



**Against Ignition**

**HANYO INDUSTRIAL SDN.BHD.**

**No. 31, JALAN BA /11, KAWASAN PERINDUSTRIAN BUKIT ANGKAT,  
43000, SG CHUA, KAJANG, SELANGOR.**

**Telephone: +6016-2316616**

**<https://biowood.my>**

**<https://hanyo.com.my>**